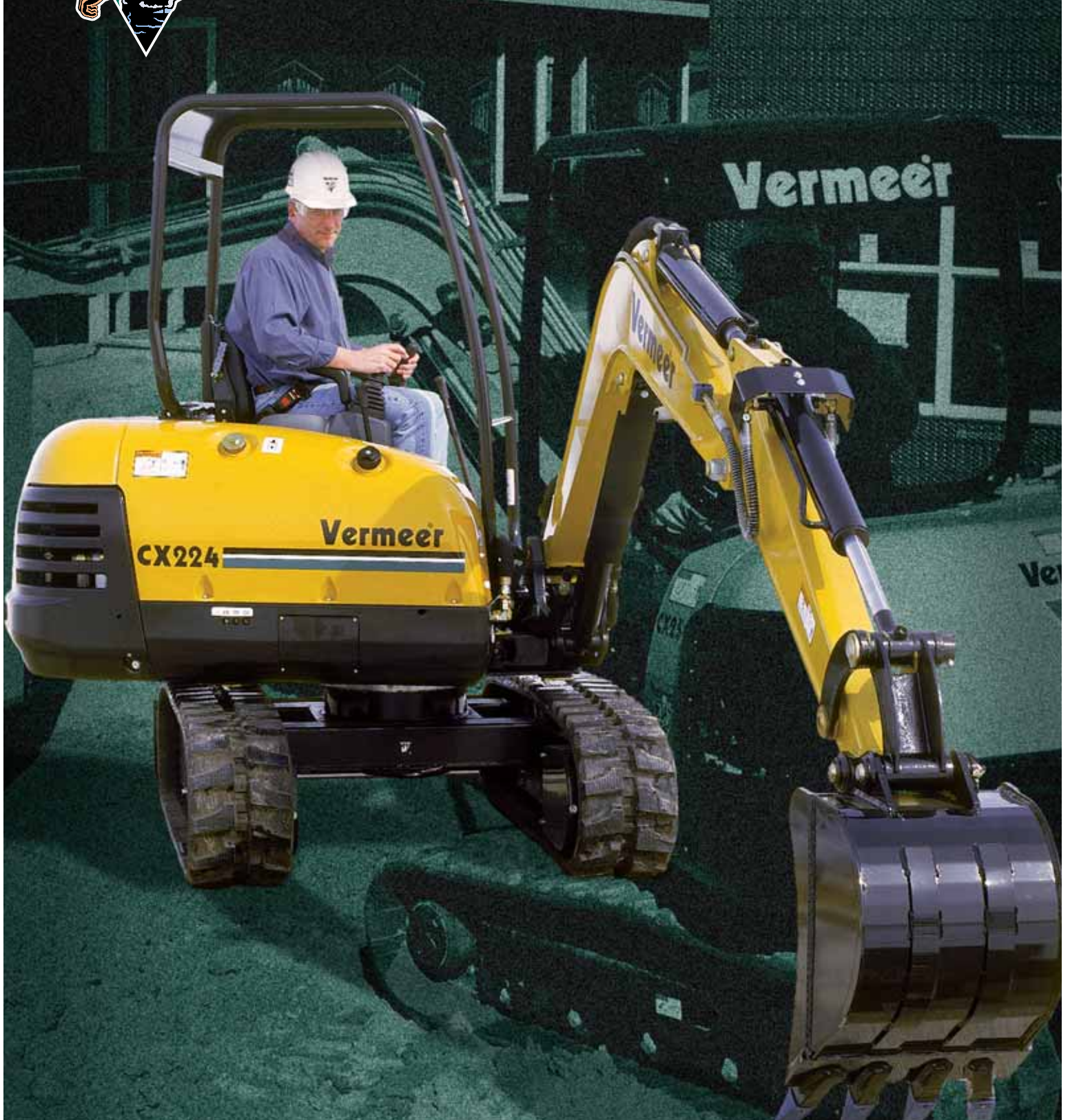


**Vermeer**



# Compact Excavators



# Vermeer®

# Compact Excavators

## Compact Size, Aggressive Performance.

A proven leader in innovative, high-performance lines of construction equipment for earthmoving and utility installation, Vermeer Manufacturing Company brings the industry a full family of compact excavators ranging from 18 HP (13 kw) to 52 HP (39 kw). Equipment renters, landscapers, utility contractors and municipalities can choose

from seven highly-versatile compact excavators including the CX216, CX218, CX219z, CX224, CX229, CX234 and CX254. Designed for high output in confined worksites, these aggressive machines offer quick, responsive controls, a comfortable operator's station and easy operation.



## Engineered For Versatility.

The family of Vermeer excavators ensures that you match the right machine to the job whether it's the CX219z with a variable-width undercarriage and zero tail swing for maneuvering in tight spaces, or the heavier, turbocharged CX254 with a larger bucket and high breakout force. All Vermeer compact excavators come standard with Kubota diesel engines and the option of a canopy or a heated cab. A variety of optional attachments are

available, including the patent pending angled backfill blade, giving them a new level of versatility in the compact excavator market. Two-speed ground drive, 360-degree swing of the operator's station and the ability to change between excavator and backhoe-style controls are just a few more of the performance features that you can expect from all Vermeer compact excavators.





*Quick, responsive controls. Pilot operated joysticks require low effort for quick, highly-responsive action. A twin pattern selection system gives operators a choice between backhoe and excavator-style controls to suit their operating preference with just a flip of a lever.*



*The comfort of climate control. Experience comfort in a range of climatic conditions with the heated and air conditioned cab option. This feature comes standard with the CX254 enclosed cab.*



*Greater stability. All Vermeer compact excavators offer a long undercarriage for greater stability. The CX218 and CX219z come standard with extendable tracks and variable width backfill blades. Both units have a narrow 40" (101 cm) profile that widens to 51" (130 cm) for greater stability on the job site.*



*Trading spaces. The zero tail swing feature on the CX219z allows it to rotate within the track's width – reducing collisions with work site structures. It's a perfect solution for high productivity in confined spaces.*



*Swing boom.*

*For expanded versatility around physical barriers, every model in the Vermeer compact excavator line offers an independent-swing boom that allows offset and flush digging near footings, walls, fences and other obstacles.*



*Industry's first angled backfill blade. All Vermeer compact excavators offer the industry's first angled backfill blade for increased backfill efficiency.*

*The patent pending blade boasts five angle backfilling positions including centered, +/-15° to the right or left, and +/-30° to the right or left. Two bolt-on extensions, fastened to the blade on the same side as the ditch, allow greater distance from the ditch during the backfilling function.*

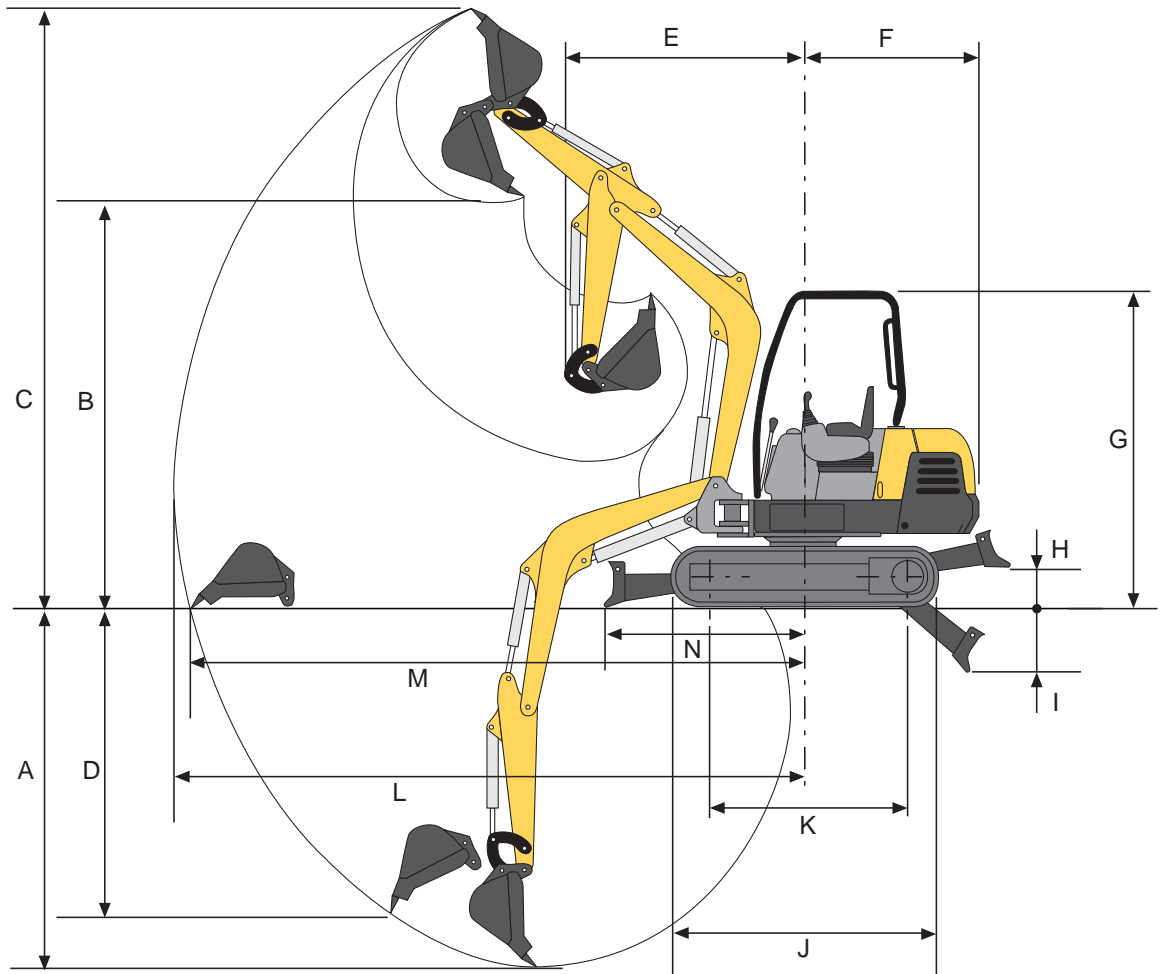


*One tool, multiple functions. The hydraulic thumb picks up odd shaped objects the bucket can't handle. Use the thumb to move pipe, pick up crushed concrete or load brush into a chipper or grinder.*



*Your sewer lateral replacement solution. The PB30 attachment, powered by the compact excavator's hydraulic reservoir, provides a light-weight, portable and cost effective method of replacing 4" (10 cm) and 6" (15 cm) sewer laterals. Use the compact excavator's capacities to dig the pit and lower the attachment in place. When replacing a lateral, the PB30 spares most of the surface disruption and destruction usually associated with the lateral replacement process.*

# Compact Excavator Specifications



Model	CX216	CX218	CX219Z	CX224	CX229	CX234	CX254
A – Max. Digging Depth	85" (216 cm)	93" (236 cm)	90" (251 cm)	101" (257 cm)	106" (269 cm)	122" (310 cm)	145" (369 cm)
B – Dump Height	91" (231 cm)	95" (241 cm)	94" (239 cm)	118" (300 cm)	124" (315 cm)	128" (330 cm)	159" (404 cm)
C – Max. Digging Height	132" (335 cm)	137" (348 cm)	135" (348 cm)	172" (437 cm)	178" (452 cm)	183" (467 cm)	228" (580 cm)
D – Max. Vertical Wall Digging Depth	55" (140 cm)	62" (157 cm)	63" (160 cm)	77" (196 cm)	90" (229 cm)	94" (241 cm)	106" (272 cm)
E – Front Swing Radius	60" (152 cm)	60" (152 cm)	63" (160 cm)	69" (175 cm)	69" (175 cm)	71" (180 cm)	74" (188 cm)
F – Rear Swing Radius	41" (104 cm)	41" (104 cm)	25" (64 cm)	49" (124 cm)	49" (124 cm)	49" (124 cm)	54" (137 cm)
G – Max. Height (Top of TOPS)	87" (221 cm)	87" (221 cm)	94" (239 cm)	93" (236 cm)	93" (236 cm)	93" (236 cm)	99" (251 cm)
H – Lift Above Ground	10" (25 cm)	10" (25 cm)	10" (25 cm)	13" (33 cm)	13" (33 cm)	13" (33 cm)	14" (36 cm)
I – Drop Below Ground	14" (36 cm)	14" (36 cm)	14" (36 cm)	14" (36 cm)	14" (36 cm)	14" (36 cm)	14" (36 cm)
J – Chassis Length	58" (147 cm)	58" (147 cm)	58" (147 cm)	53" (135 cm)	59" (150 cm)	59" (150 cm)	76" (193 cm)
K – Track Length on Ground	44" (112 cm)	44" (112 cm)	44" (112 cm)	72" (183 cm)	79" (201 cm)	79" (201 cm)	96" (244 cm)
L – Max. Reach	147" (373 cm)	154" (391 cm)	154" (391 cm)	178" (452 cm)	184" (467 cm)	195" (495 cm)	246" (625 cm)
M – Max. Reach at Ground	143" (363 cm)	151" (384 cm)	150" (381 cm)	173" (440 cm)	180" (457 cm)	192" (488 cm)	235" (597 cm)
N – Dozer Blade Reach	44" (cm)	44" (112 cm)	43" (109 cm)	57" (145 cm)	57" (145 cm)	57" (145 cm)	63" (160 cm)



CX216



CX218



CX219Z



CX224



CX229



CX234



CX254

Model	CX216	CX218	CX219Z	CX224	CX229	CX234	CX254
Operating Weight (Rubber Tracks, TOPS canopy)	3307 lbs (1500 kg)	3637 lbs (1650 kg)	3968 lbs (1800 kg)	5291 lbs (2400 kg)	6063 lbs (2750 kg)	6725 lbs (3050 kg)	11023 lbs (5000 kg)
Operating Weight (Rubber Tracks, TOPS cab)	3527 lbs (1600 kg)	3858 lbs (1750 kg)	4189 lbs (1900 kg)	5622 lbs (2550 kg)	6393 lbs (2900 kg)	7055 lbs (3200 kg)	11224 lbs (5091 kg)
Bucket Breakout Force	3307 lbs (1500 kg)	3310 lbs (1501 kg)	3307 lbs (1500 kg)	4410 lbs (2000 kg)	4409 lbs (2000 kg)	5072 lbs (2301 kg)	7716 lbs (3500 kg)
Dipper Breakout Force	1951 lbs (885 kg)	1720 lbs (780 kg)	2006 lbs (910 kg)	2866 lbs (1300 kg)	N/A	2700 lbs (1225 kg)	5600 lbs (2540 kg)
Travel Speed (Low Range)	1.1 mph (1.8 km/h)	1.1 mph (1.8 km/h)	1.2 mph (1.9 km/h)	1.6 mph (2.6 km/h)	1.5 mph (2.4 km/h)	1.6 mph (2.6 km/h)	1.8 mph (2.9 km/h)
Travel Speed (High Range)	1.8 mph (3 km/h)	1.8 mph (3 km/h)	2.8 mph (4.5 km/h)	2.8 mph (4.5 km/h)	2.8 mph (4.5 km/h)	2.5 mph (4 km/h)	3.2 mph (5.2 km/h)
Engine Make/Model	Kubota D 1005-E Diesel	Kubota D 1005-E Diesel	Kubota D 722-E Diesel	Kubota V1305-E Diesel	Kubota V 1305-E Diesel	Kubota D 1703-E Diesel	Kubota V2003-T Diesel
Cylinders	3	3	3	4	4	3	4
Horsepower	18 HP (13.4 kw) @ 2500 RPM	18 HP (13.4 kw) @ 2500 RPM	14.3 HP (10.6 kw) @ 2500 RPM	25 HP (18.6 kw) @ 2500 RPM	25 HP (18.6 kw) @ 2500 RPM	32 HP (24 kw) @ 2500 RPM	52 HP (39 kw) @ 2400 RPM
Fuel Tank Capacity	5.8 gal (22 L)	5.8 gal (22 L)	5.3 gal (20 L)	9.6 gal (36.3 L)	9.6 gal (36.3 L)	9.5 gal (36 L)	17.2 gal (65.1L)
Max. Width	40" (102 cm)	51" (130 cm)	51" (130 cm)	58" (147 cm)	58" (147 cm)	58" (147 cm)	74" (188 cm)
Max. Width (Tracks Fully Retracted)	N/A	40" (102 cm)	40" (102 cm)	N/A	N/A	N/A	N/A
Track Shoe Width	9" (23 cm)	9" (23 cm)	9" (23 cm)	12" (30 cm)	12" (30 cm)	12" (30 cm)	16" (41 cm)
Ground Pressure	3.8 psi (.26 bar)	3.8 psi (.26 bar)	3.8 psi (.26 bar)	4.1 psi (.28 bar)	4.1 psi (.28 bar)	4.4 psi (.3 bar)	4 psi (.28 bar)
Dozer Blade Width	40" (102 cm)	40" (102 cm)	40" (102 cm)	58" (147 cm)	58" (147 cm)	58" (147 cm)	74" (188 cm)
Width (w/ Extension)	N/A	51" (130 cm)	51" (130 cm)	N/A	N/A	N/A	N/A
Swing	85° right / 50° left	85° right / 50° left	85° right / 50° left	80° right / 55° left	80° right / 55° left	80° right / 55° left	80° right / 55° left
Auxiliary Hydraulic Flow	8.7 gpm (32.9 L/min)	8.7 gpm (32.9 L/min)	9.5 gpm (36 L/min)	14.8 gpm (56 L/min)	14.8 gpm (56 L/min)	17.2 gpm (65.1 L/min)	26.4 gpm (99.9 L/min)

# Quality Parts and Service. Certified Peace of Mind.



*Get the parts and service edge. In addition to providing quality equipment, Vermeer delivers top-quality parts and superior services. Vermeer parts are manufactured to exacting specifications to help keep your Vermeer equipment running trouble-free and at OEM specifications.*



*Vermeer offers factory-certified training programs to its dealer network to ensure that the most current service procedures are presented to the service personnel of your Vermeer dealer.*



*Genuine Vermeer parts are precision crafted to match to your Vermeer equipment EXACTLY. This ensures that your system will run as smoothly as possible, with the least amount of service and maintenance.*

## Vermeer®

Vermeer Manufacturing Company  
1210 Vermeer Road East  
P.O. Box 200  
Pella, Iowa 50219 U.S.A.  
Phone: (641) 628-3141  
Fax: (641) 621-7734  
International fax: +1 (641) 621-7730  
[www.vermeer.com](http://www.vermeer.com)

Call toll-free 1-888-VERMEER  
1-888-837-6337 (U.S.A. only)

Europe, Middle East and Africa:  
P.O. Box 323  
4460 AS Goes  
Netherlands  
Phone: +31 113 272700  
Fax: +31 113 272727

Equipment shown is for illustrative purposes only and may display optional accessories or components. Please contact your local Vermeer Dealer for more information on machine specifications. Vermeer reserves the right to make changes in engineering, design and specifications; add improvements; or discontinue manufacture at any time without notice or obligation. VERMEER and VERMEER LOGO are registered trademarks of Vermeer Manufacturing Company in the U.S. and/or other countries. Kubota is a trademark of Kubota, Ltd. © 2004 Vermeer Manufacturing Company. All Rights Reserved.